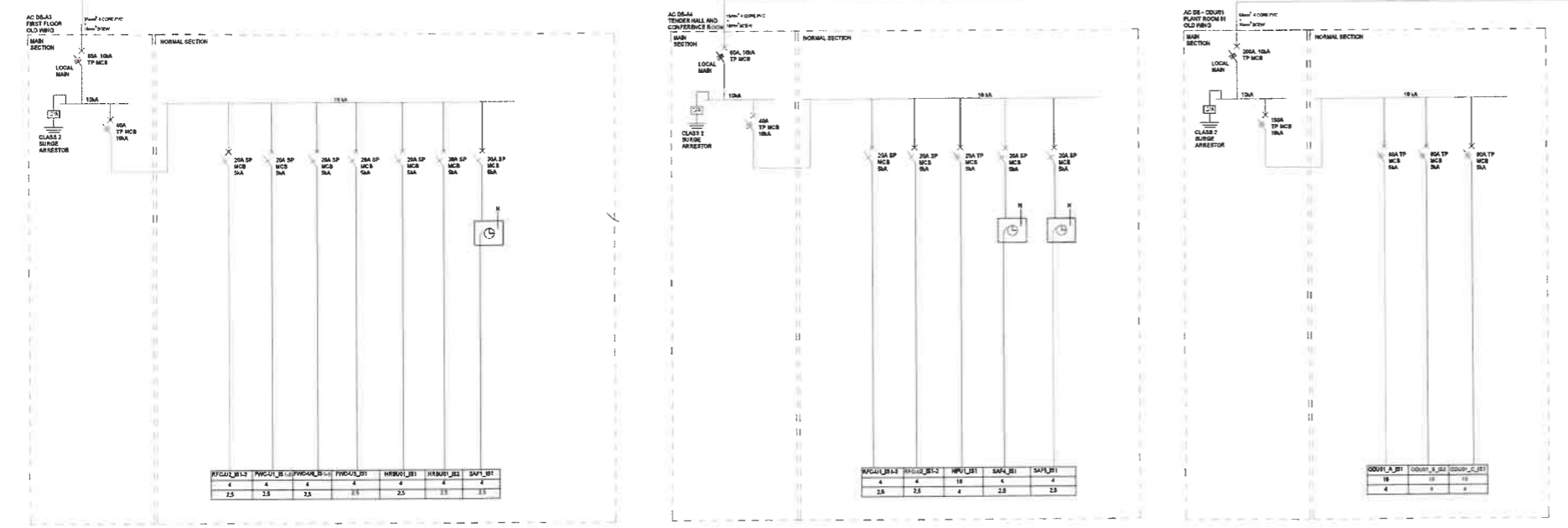
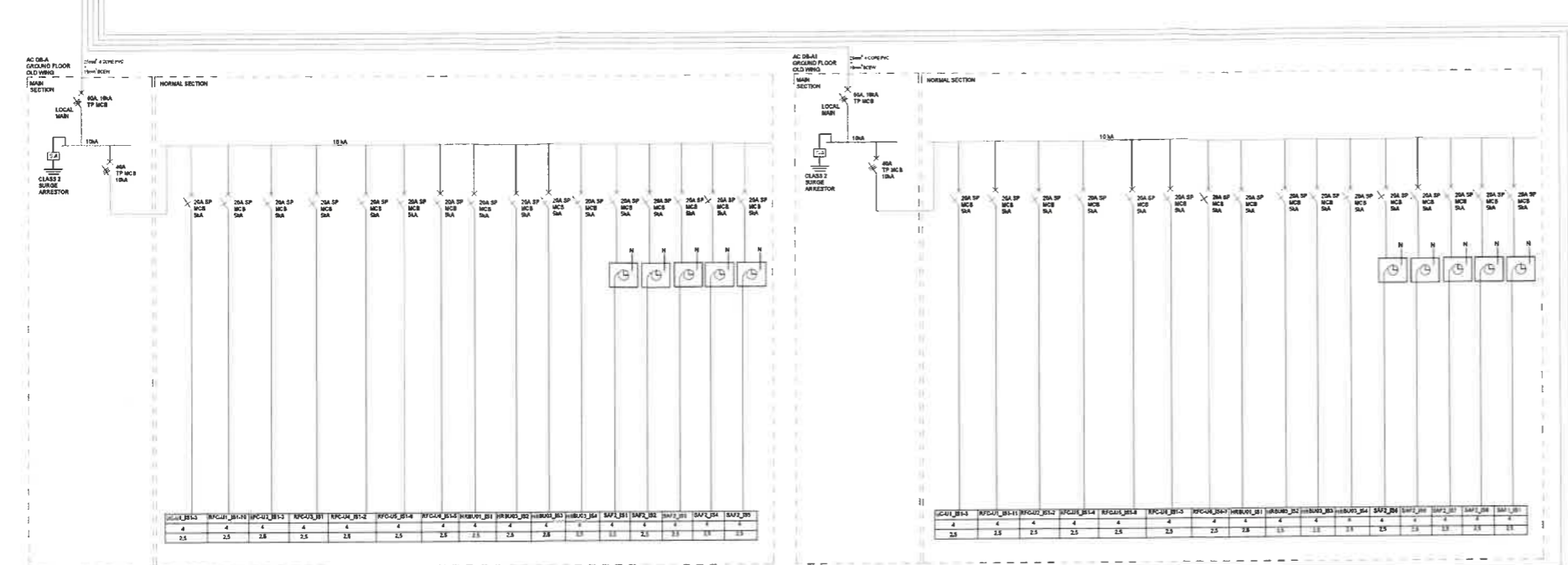


FROM EXISTING MAIN DB/MAIN SUPPLY



Distribution Board Information AC_DB-A1				
Construction:		Limiting Dimensions		Voltage:
Recessed	✓	Width (mm)	-	400V 3PHASE
Semi-recessed	-	Height (mm)	-	230V 1PHASE
Surface IP 65RATED	-	Depth (mm)	-	50Hz
Floor Standing	✓			
Doors (Not lockable)	-	Color:		Service Access
Doors (Lockable)	✓	Normal Section (N)	Orange	Front
Separate Cubicles	✓	Standby Section (E)	-	Rear
Spare Space (%)	20%	UPS	-	Both
Entry Incoming:		Fault Level:		Busbar Rating:
Top	✓	Normal Section (N)	10	Normal Section (N) 60A
Bottom	✓	Standby Section (E)	-	Standby Section(E) -
Side	✓	UPS	-	UPS Section -
Entry Outgoing		Neutral:		
Top	✓	Half	-	
Bottom	✓	Full	✓	
Side	✓			

Distribution Board Information AC_DB-A2				
Construction:		Limiting Dimensions		Voltage:
Recessed	✓	Width (mm)	-	400V 3PHASE
Semi-recessed	-	Height (mm)	-	230V 1PHASE
Surface IP 65RATED	-	Depth (mm)	-	50Hz
Floor Standing	✓			
Doors (Not lockable)	-	Color:		Service Access
Doors (Lockable)	✓	Normal Section (N)	Orange	Front
Separate Cubicles	✓	Standby Section (E)	-	Rear
Spare Space (%)	20%	UPS	-	Both
Entry Incoming:		Fault Level:		Busbar Rating:
Top	✓	Normal Section (N)	10	Normal Section (N) 60A
Bottom	✓	Standby Section (E)	-	Standby Section(E) -
Side	✓	UPS	-	UPS Section -
Entry Outgoing		Neutral:		
Top	✓	Half	-	
Bottom	✓	Full	✓	
Side	✓			

Distribution Board Information AC_DB-A3				
Construction:		Limiting Dimensions		Voltage:
Recessed	✓	Width (mm)	-	400V 3PHASE
Semi-recessed	-	Height (mm)	-	230V 1PHASE
Surface IP 65RATED	-	Depth (mm)	-	50Hz
Floor Standing	✓			
Doors (Not lockable)	-	Color:		Service Access
Doors (Lockable)	✓	Normal Section (N)	Orange	Front
Separate Cubicles	✓	Standby Section (E)	-	Rear
Spare Space (%)	20%	UPS	-	Both
Entry Incoming:		Fault Level:		Busbar Rating:
Top	✓	Normal Section (N)	10	Normal Section (N) 40A
Bottom	✓	Standby Section (E)	-	Standby Section(E) -
Side	✓	UPS	-	UPS Section -
Entry Outgoing		Neutral:		
Top	✓	Half	-	
Bottom	✓	Full	✓	
Side	✓			

Distribution Board Information AC_DB-A4				
Construction:		Limiting Dimensions		Voltage:
Recessed	✓	Width (mm)	-	400V 3PHASE
Semi-recessed	-	Height (mm)	-	230V 1PHASE
Surface IP 65RATED	-	Depth (mm)	-	50Hz
Floor Standing	✓			
Doors (Not lockable)	-	Color:		Service Access
Doors (Lockable)	✓	Normal Section (N)	Orange	Front
Separate Cubicles	✓	Standby Section (E)	-	Rear
Spare Space (%)	20%	UPS	-	Both
Entry Incoming:		Fault Level:		Busbar Rating:
Top	✓	Normal Section (N)	10	Normal Section (N) 40A
Bottom	✓	Standby Section (E)	-	Standby Section(E) -
Side	✓	UPS	-	UPS Section -
Entry Outgoing		Neutral:		
Top	✓	Half	-	
Bottom	✓	Full	✓	
Side	✓			

Distribution Board Information AC_DB-ODU/01				
Construction:		Limiting Dimensions		Voltage:
Recessed	✓	Width (mm)	-	400V 3PHASE
Semi-recessed	-	Height (mm)	-	230V 1PHASE
Surface IP 65RATED	-	Depth (mm)	-	50Hz
Floor Standing	✓			
Doors (Not lockable)	-	Color:		Service Access
Doors (Lockable)	✓	Normal Section (N)	Orange	Front
Separate Cubicles	✓	Standby Section (E)	-	Rear
Spare Space (%)	20%	UPS	-	Both
Entry Incoming:		Fault Level:		Busbar Rating:
Top	✓	Normal Section (N)	10	Normal Section (N) 200A
Bottom	✓	Standby Section (E)	-	Standby Section(E) -
Side	✓	UPS	-	UPS Section -
Entry Outgoing		Neutral:		
Top	✓	Half	-	
Bottom	✓	Full	✓	
Side	✓			

NO.	DATE	AMENDMENT	D.P.W.
4	05/03/20	PRELIMINARY DRAWING	XZ

NOTES:
 1. In the event that this design layout drawing is reproduced or used in any form without prior knowledge and written approval will imply thereby that the user has accepted the design and is responsible for any consequences that may arise.
 2. All electrical installations must be designed in accordance with the relevant standards and codes of practice.
 3. All electrical installations must be designed in accordance with the relevant standards and codes of practice.
 4. All electrical installations must be designed in accordance with the relevant standards and codes of practice.

- All indoor air conditioning units must have a separate holder mounted next to the fan coil.
- All floor recovery units must have a separate holder.
- All fresh air fans and ducted fan systems must have a separate holder.



Copyright vests in the Department of Public Works

es-001-01-01

--- certified as-built drawings as per Controlled Drawing process ADAPTIVITY DRAWINGS REQUIREMENTS

name: _____

date: _____

professional registration no.: _____

rev. no. _____ page type A 0

sheet _____



service ELECTRICAL

KIMBERLEY: DIPW REGIONAL OFFICES: REPLACEMENT OF AIR CONDITIONING AND SYSTEMS

OLD WING SECTION

WCS number _____

drawing title AC DB- LV RETICULATION OVERVIEW OLD WING SECTION

rev. no. A designed J. Dube

scale NTS drawn J. Dube

date: April 2020 checked M. Deyo

approved by: A. D. M. Phiso P. Eng P. No. 130076

DIPW drawing number

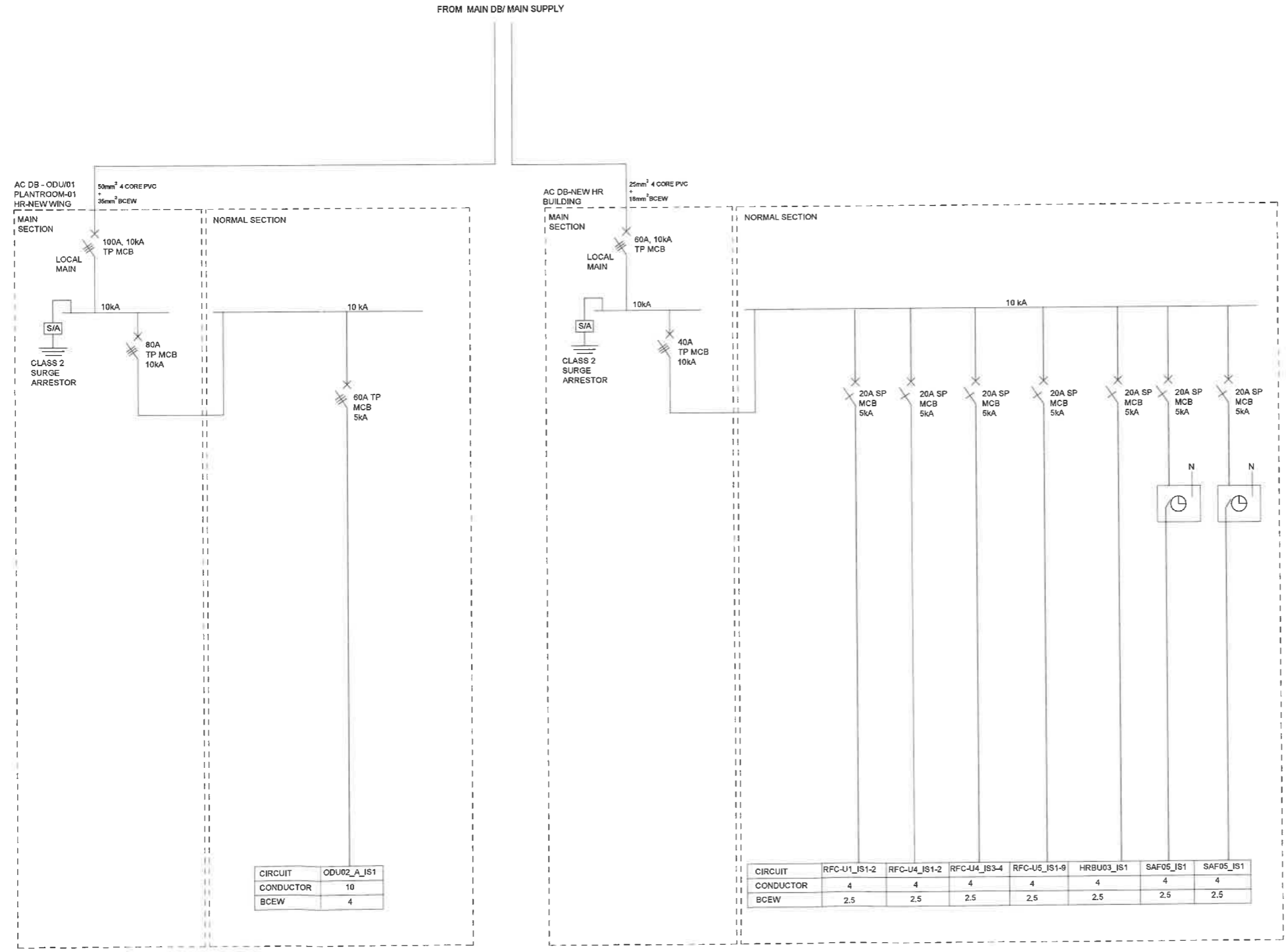
EE 2019/OMB/D08

Distribution Board Information. AC-DB- NEW HR BUILDING				
Construction:		Limiting Dimensions		Voltage:
Recessed	-	Width (mm)		400V 3PHASE ✓
Semi-recessed	-	Height (mm)		230V 1PHASE -
Surface IP 65RATED	✓	Depth (mm)		50Hz ✓
Floor Standing	-			
Doors (Not lockable)	-	Color:		Service Access
Doors (Lockable)	✓	Normal Section (N)	Orange	Front ✓
Separate Cubicles	✓	Standby Section (E)	Red	Rear -
Spare Space (%)	20%	UPS	Blue	Both -
Entry Incoming:		Fault Level:		Busbar Rating:
Top	✓	Normal Section (N)	10	Normal Section (N) 60
Bottom	✓	Standby Section (E)	-	Standby Section(E) -
Side	✓	UPS	-	UPS Section -
Entry Outgoing		Neutral:		
Top	✓	Half	-	
Bottom	✓	Full	✓	
Side	✓			

DB LAYOUT PLAN

Distribution Board Information. AC DB-ODU/01 PLANT ROOM 01				
Construction:		Limiting Dimensions		Voltage:
Recessed	-	Width (mm)		400V 3PHASE ✓
Semi-recessed	-	Height (mm)		230V 1PHASE -
Surface IP 65RATED	✓	Depth (mm)		50Hz ✓
Floor Standing	-			
Doors (Not lockable)	-	Color:		Service Access
Doors (Lockable)	✓	Normal Section (N)	Orange	Front ✓
Separate Cubicles	✓	Standby Section (E)	Red	Rear -
Spare Space (%)	20%	UPS	Blue	Both -
Entry Incoming:		Fault Level:		Busbar Rating:
Top	✓	Normal Section (N)	10	Normal Section (N) 100
Bottom	✓	Standby Section (E)	-	Standby Section(E) -
Side	✓	UPS	-	UPS Section -
Entry Outgoing		Neutral:		
Top	✓	Half	-	
Bottom	✓	Full	✓	
Side	✓			

DB LAYOUT PLAN



NO.	DATE	REVISION	BY
1	2020/04	PRELIMINARY DRAWING	EE

NOTES:

- All work on this drawing must have a separate notice issued to the client.
- All work on this drawing must have a separate notice issued to the client.
- All work on this drawing must have a separate notice issued to the client.

LEGEND:

○ CAT - TRIP Test Switch

Copyright vests in the Department of Public Works

Author: _____

Checked: _____

Date: _____

Professional registration no.: _____

Scale: _____

Sheet No: _____ of _____

Project Name: _____

Client: _____

Department: Public Works and Infrastructure
REPUBLIC OF SOUTH AFRICA

Consultant: **ZCES Consultants**

Discipline: **ELECTRICAL**

Project: **KIMBERLEY REGIONAL OFFICE REPLACEMENT OF AIR CONDITIONING SYSTEM**

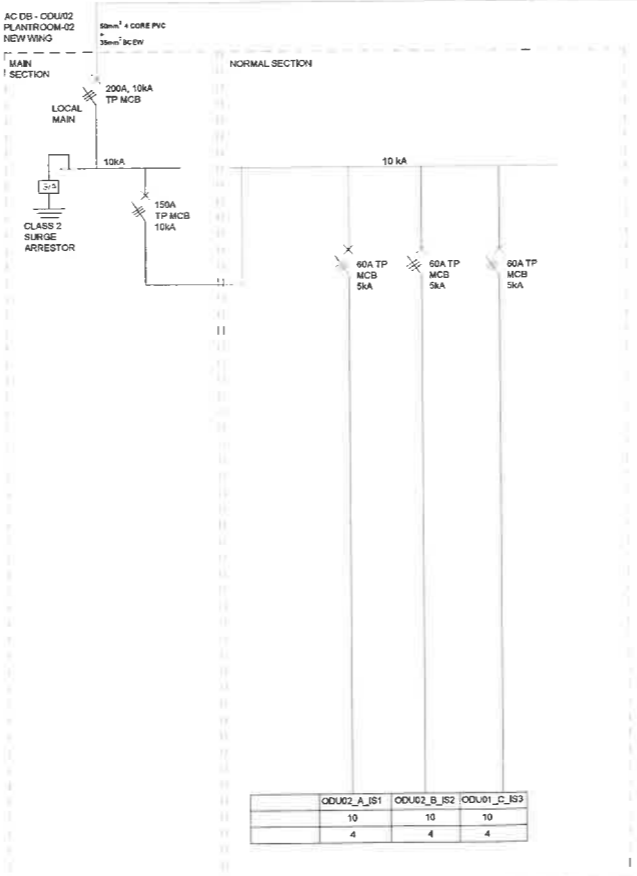
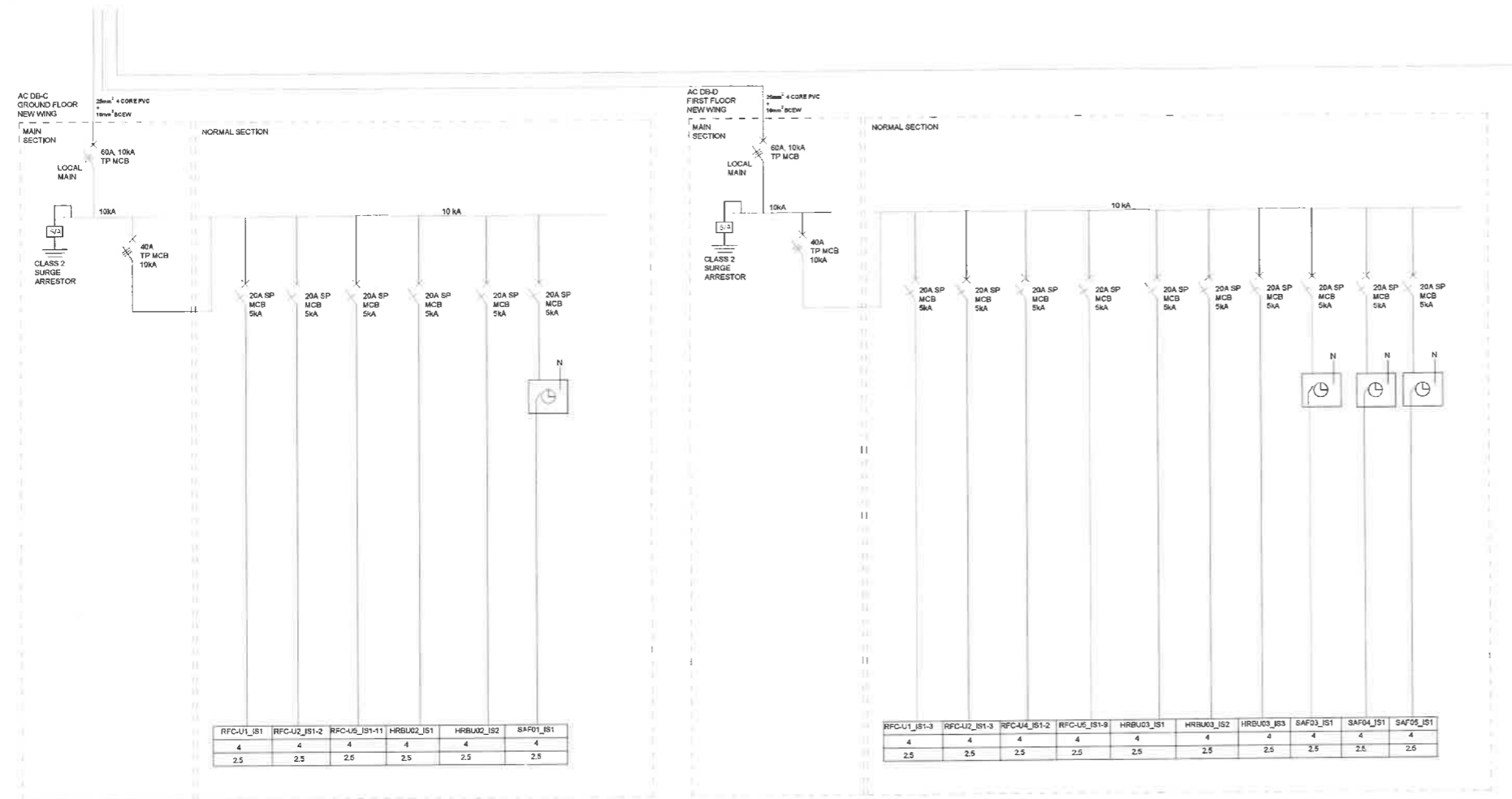
Drawing No: _____

AC DB LAYOUT_NEW HR BUILDING. DB OVERVIEW LAYOUT

Rev. No.	A	Designed	J. Dube
Scale	HTS	Drawn	J. Dube
Date	April 2020	Checked	M. Zym
Approved by	A. Nkomo PE/Eng	Proj No	930016
DWP drawing number			

EE 2019/OMB/HRD1

FROM MAIN DB/ MAIN SUPPLY



Construction:	Limiting Dimensions	Voltage:
Recessed	Width (mm) ✓	400V 3PHASE ✓
Semi-recessed	Height (mm) -	230V 1PHASE -
Surface IP 65RATED	Depth (mm) -	50Hz ✓
Floor Standing	✓	
Doors (Not lockable)	Color: -	Service Access -
Doors (Lockable)	Normal Section (N) ✓	Orange Front ✓
Separate Cubicles	Standby Section (E) -	Rear -
Spare Space (%)	UPS 20% ✓	Both -
Entry Incoming:	Fault Level:	Busbar Rating:
Top ✓	Normal Section (N) 10 ✓	Normal Section (N) 60A ✓
Bottom ✓	Standby Section (E) -	Standby Section(E) -
Side ✓	UPS -	UPS Section -
Entry Outgoing	Neutral:	
Top ✓	Half -	
Bottom ✓	Full ✓	
Side ✓		

Construction:	Limiting Dimensions	Voltage:
Recessed	Width (mm) ✓	400V 3PHASE ✓
Semi-recessed	Height (mm) -	230V 1PHASE -
Surface IP 65RATED	Depth (mm) -	50Hz ✓
Floor Standing	✓	
Doors (Not lockable)	Color: -	Service Access -
Doors (Lockable)	Normal Section (N) ✓	Orange Front ✓
Separate Cubicles	Standby Section (E) -	Rear -
Spare Space (%)	UPS 20% ✓	Both -
Entry Incoming:	Fault Level:	Busbar Rating:
Top ✓	Normal Section (N) 10 ✓	Normal Section (N) 60A ✓
Bottom ✓	Standby Section (E) -	Standby Section(E) -
Side ✓	UPS -	UPS Section -
Entry Outgoing	Neutral:	
Top ✓	Half -	
Bottom ✓	Full ✓	
Side ✓		

Construction:	Limiting Dimensions	Voltage:
Recessed	Width (mm) ✓	400V 3PHASE ✓
Semi-recessed	Height (mm) -	230V 1PHASE -
Surface IP 65RATED	Depth (mm) -	50Hz ✓
Floor Standing	✓	
Doors (Not lockable)	Color: -	Service Access -
Doors (Lockable)	Normal Section (N) ✓	Orange Front ✓
Separate Cubicles	Standby Section (E) -	Rear -
Spare Space (%)	UPS 20% ✓	Both -
Entry Incoming:	Fault Level:	Busbar Rating:
Top ✓	Normal Section (N) 10 ✓	Normal Section (N) 200A ✓
Bottom ✓	Standby Section (E) -	Standby Section(E) -
Side ✓	UPS -	UPS Section -
Entry Outgoing	Neutral:	
Top ✓	Half -	
Bottom ✓	Full ✓	
Side ✓		

Revised Drawing

No.	DATE	AMENDMENT	ED/VP
1	202403	PRELIMINARY DRAWING	KZ

NOTES:

- All color for conditioning units must have a separate indicator mounted next to it in the unit.
- All final incoming buses and must have a separate indicator.
- All final air bars and ductal bus systems must have a separate indicator.

LEGEND:

100A - 1750A Time Switch

Copyright vests in the Department of Public Works

61-006 drawings

certified as-built drawings as per Contracted Drawing

Professional registration no. _____

cert no _____ page No _____

_____ A 0

Department: P.A.W. Works and Infrastructure REPUBLIC OF SOUTH AFRICA

consultant

ZCES Consultants

Electrical

service

KIMBERLEY: DIPW REGIONAL OFFICES: REPLACEMENT OF AIR CONDITIONING SYSTEM NEW WING SECTION

WCS number _____

drawing title

AC DB- LV RETICULATION OVERVIEW

rev no A designed J. Dalry

scale HTS drawn J. Dalry

date April 2020 checked M. Tryps

approved by A. Akhasebe PLETD PR No: 220675

ED/VP drawing number

EE 2019/OMB/D05/NW