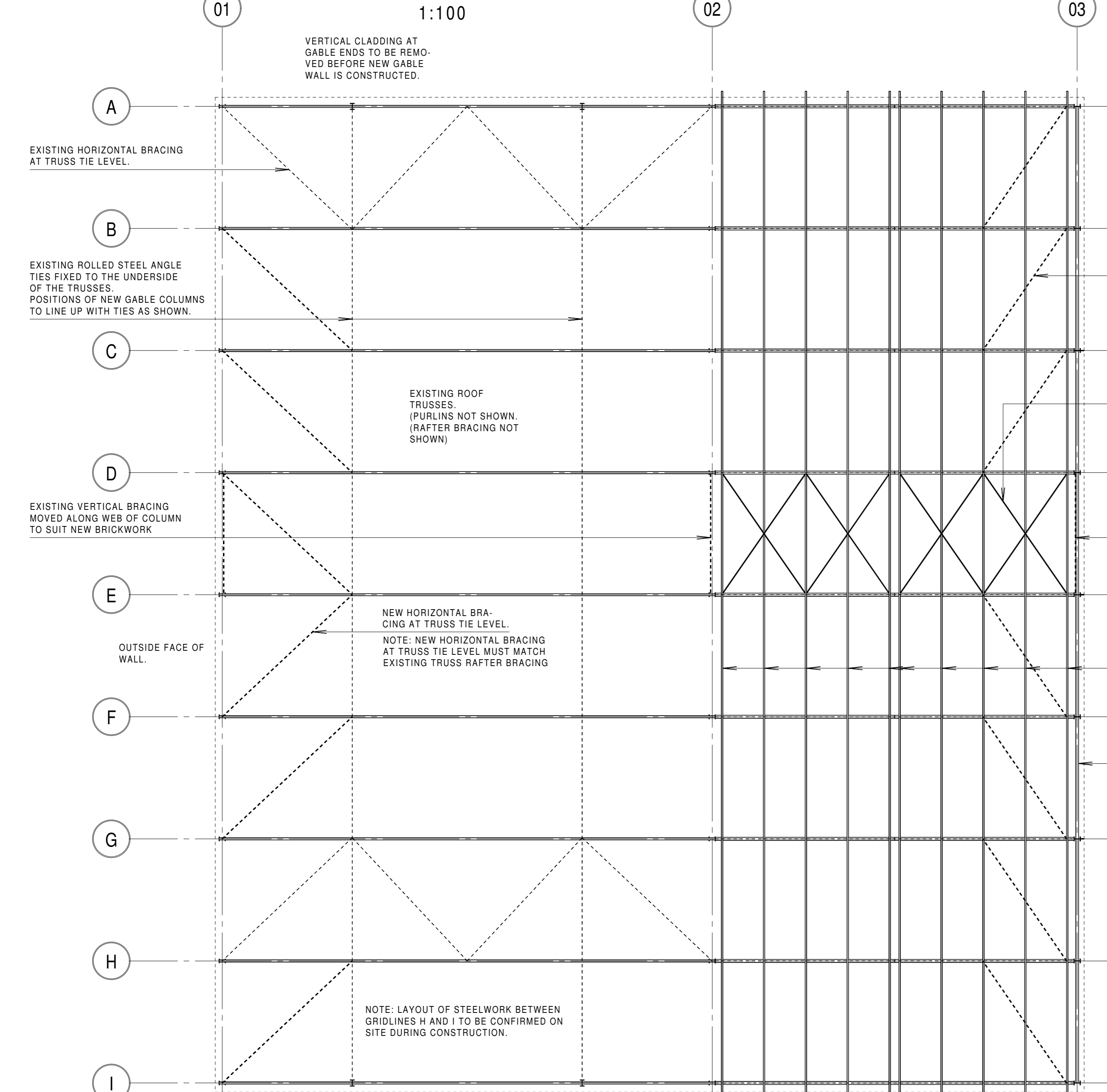
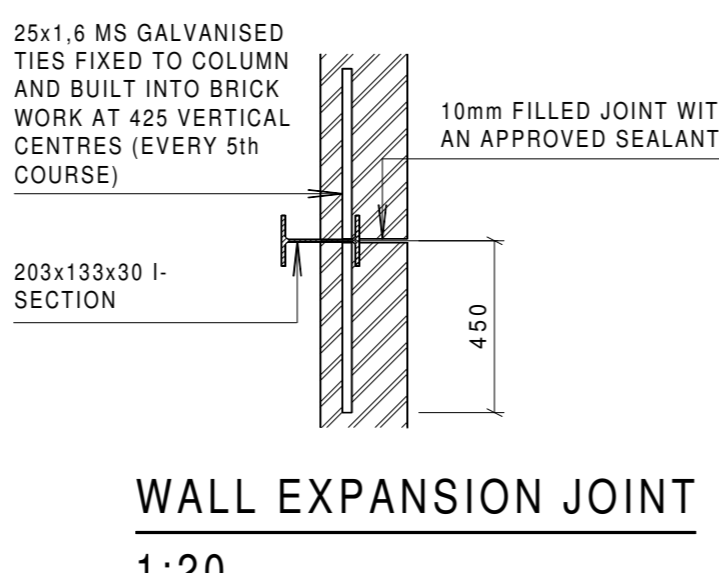


GENERAL ARRANGEMENT: COLUMN BASES AND WALL FOUNDATIONS
1:100

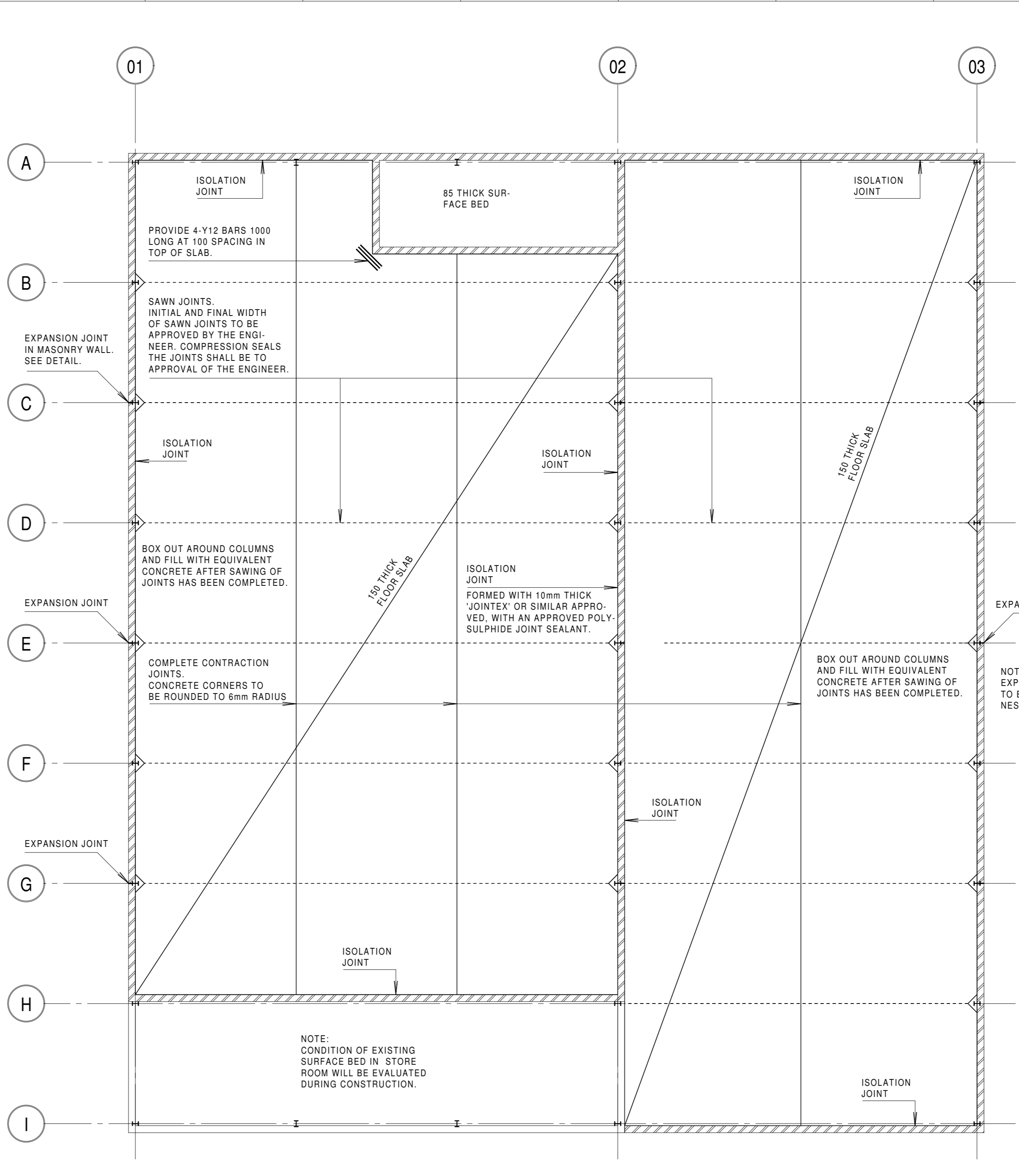


GENERAL ARRANGEMENT: ROOF STRUCTURE
1:100

CONCRETE FLOOR SLABS
NOTES AND SPECIFICATIONS
1. CONCRETE FOR FLOOR SLABS SHALL BE CLASS 35/19 (35 MPa). THE FLOOR THICKNESS SHALL BE 150mm UNLESS OTHERWISE INDICATED OR SPECIFIED. A LAYER OF US8 GREEN OR SIMILAR APPROVED SHALL BE PLACED ON THE COMPACTED MATERIAL BEFORE CONCRETE IS CAST.
2. THE SLAB SHALL CONSIST OF PANELS AS SHOWN ON THE LAYOUT DRAWING. THE PANELS SHALL BE FORMED BY CONSTRUCTING ALTERNATE LONG STRIPS WITH TRANSVERSE SAW CUTS. THE CONTRACTOR'S PROPOSED METHOD OF CONSTRUCTING THE FLOOR SLABS MUST BE APPROVED BY THE ENGINEER.
3. THE SURFACE OF THE CONCRETE SHALL BE POWER FLOATED TO THE FINISH SPECIFIED BY THE ARCHITECT OR TO THE CLIENT'S REQUIREMENTS.
4. POLYPROPYLENE FIBRES (SILKA FIBRES OR SIMILAR APPROVED) SHALL BE ADDED TO THE CONCRETE AT A RATE OF NOT LESS THAN 600 GRAM/CUBIC METRE OF CONCRETE, OR AS SPECIFIED BY THE SUPPLIER. THE FIBRES SHALL BE MIXED INTO THE CONCRETE IN STRICT ACCORDANCE WITH THE SUPPLIER'S SPECIFICATIONS AND REQUIREMENTS.



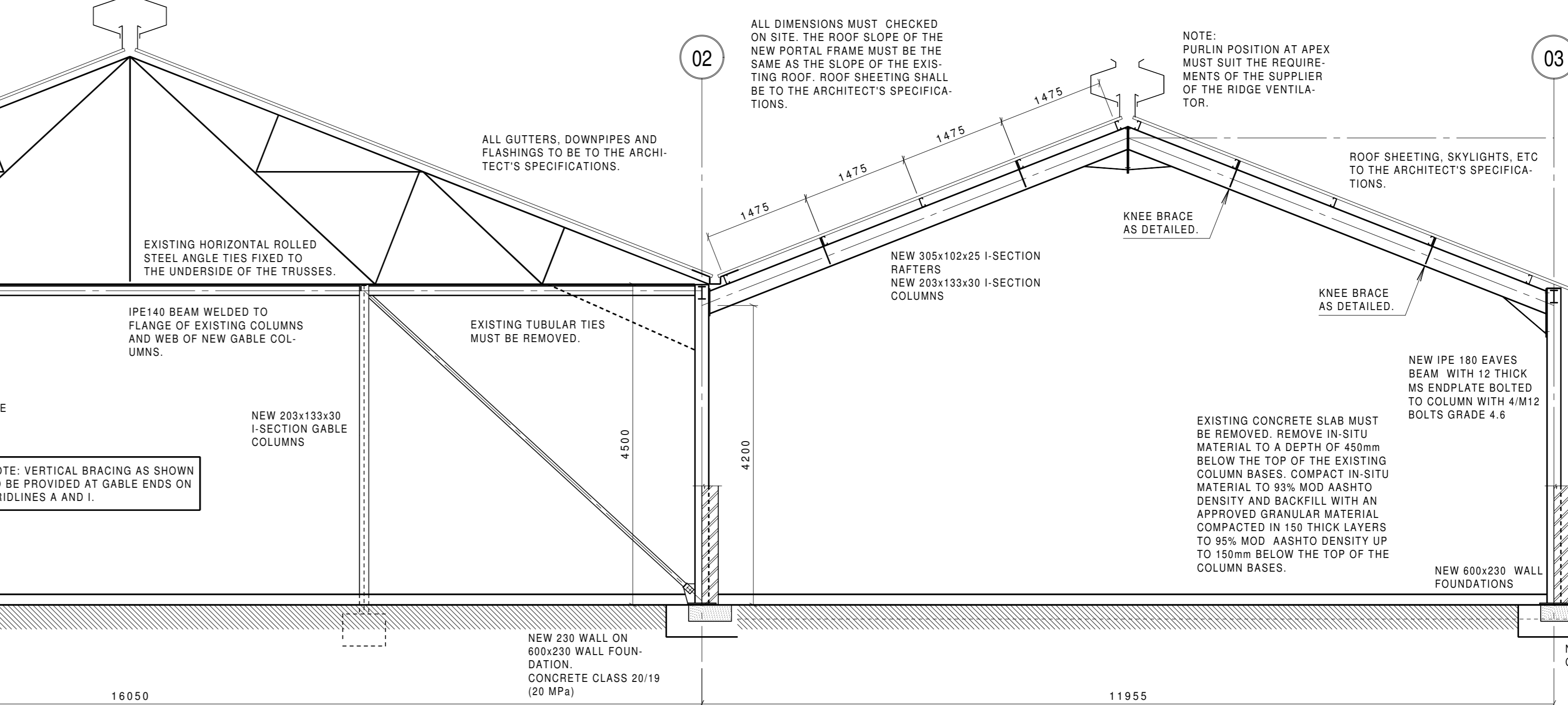
WALL EXPANSION JOINT
1:20



FLOORSLAB LAYOUT
1:100

NOTES AND SPECIFICATIONS
MASONRY WALLING
1. MASONRY WALLING SHALL CONFORM IN ALL RESPECTS TO THE REQUIREMENTS OF SABS D164: PART 1 1980
2. MORTAR SHALL BE CLASS II (COMPR. STRENGTH OF 7 MPa AT 28 DAYS)
3. THE REQUIREMENTS SET OUT IN APPENDIX B OF SABS D164: PART 1 SHALL BE ADHERED TO UNLESS OTHERWISE APPROVED OR DIRECTED BY THE ENGINEER.
4. BRICKS SHALL COMPLY WITH THE REQUIREMENTS OF SABS 1212 AND SHALL HAVE A NOMINAL COMPRESSION STRENGTH OF NOT LESS THAN 14 MPa, AND A WATER ABSORPTION BETWEEN 7% AND 12%
5. THE OUTER LEAF OF THE CAVITY WALLS SHALL BE TIED TO THE BACKING WALL WITH A MINIMUM OF 3 TIES/m² AND THE SPACING OF THE TIES SHALL BE AS UNIFORM AS IS PRACTICABLE. ADDITIONAL TIES AT INTERVALS NOT EXCEEDING 500mm IN HEIGHT SHALL BE PROVIDED NEAR THE SIDES OF OPENINGS, AND AT DISCONTINUITIES. EACH MUST BE EMBEDDED TO A DEPTH OF AT LEAST 50mm IN THE MORTAR OF EACH LEAF.
6. WIRE TIES SHALL COMPLY WITH THE RELEVANT REQUIREMENTS OF SABS 28 SUBJECT TO THE PROVISION THAT TIES OF THE SINGLE WIRE TYPE SHALL NOT BE USED. WIRE TIES SHALL BE GALVANISED.

COLUMN BASE REINFORCEMENT
(13 OFF)
1:25



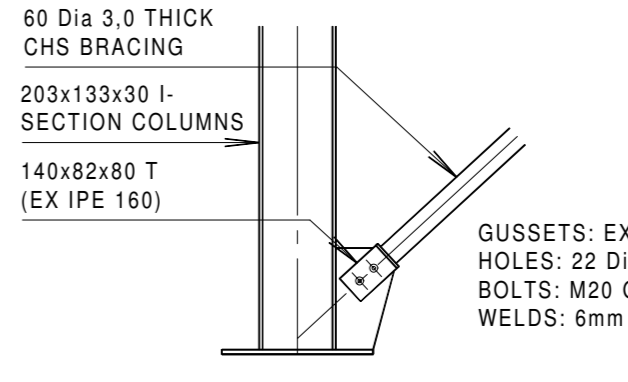
EXISTING SHELTERED STORAGE
NOTE: NEW VERTICAL BRACING AT GABLE ENDS ONLY.

SECTION A
1:50
MEZZANINE FLOOR NOT SHOWN.

PROPOSED SHELTERED STORAGE

1. DESIGN STANDARDS
1.1 STRUCTURAL STEELWORK: SANS 10162-1: 2005
1.2 REINFORCED CONCRETE: SANS 10100-1
1.3 LOADS: SANS 10161 (AS AMENDED)
1.4 STRUCTURAL USE OF MASONRY: SABS D164-1: (AS AMENDED)
2. MATERIALS
2.1 STRUCTURAL STEEL: GRADE S355
2.2 STRUCTURAL STEEL SECTIONS: GRADE S355
2.3 COMMERCIAL QUALITY STEEL: 19/200 MPa, fu=450 MPa
3. CONSTRUCTION STRUCTURAL STEELWORK
3.1 ALL STRUCTURAL STEELWORK SHALL BE IN STRICT ACCORDANCE WITH SANS 2001-GS1-2012

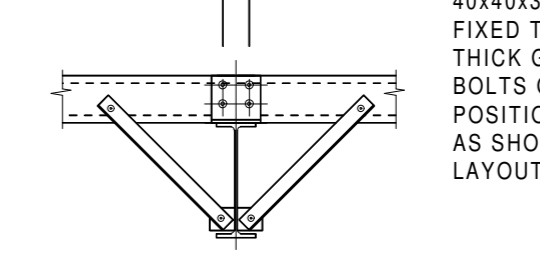
SHOP DETAILS
1. THE CONTRACTOR SHALL PREPARE WORKSHOP DRAWINGS FOR ALL STRUCTURAL STEELWORK. ON RECEIPT OF THE DESIGN DRAWINGS, THE CONTRACTOR SHALL SATISFY HIMSELF THAT THE DESIGN DRAWINGS CONTAIN ALL THE INFORMATION REQUIRED FOR THE PREPARATION OF THE SHOP DETAILS.
2. THE SHOP DETAILS SHALL BE SUBMITTED IN DUPLICATE TO THE ENGINEER FOR APPROVAL AT LEAST ONE MONTH (OR SUCH OTHER PERIOD AS MAY BE STATED IN THE PROJECT SPECIFICATIONS OR AGREED UPON) BEFORE THE COMMENCEMENT OF FABRICATION.
3. THE CONTRACTOR'S DRAWINGS SHALL BE COMPLETE IN EVERY RESPECT INCLUDING WELDING DETAILS WHICH SHALL BE FULLY DESCRIBED AND SHALL BE CHECKED BY THE CONTRACTOR PRIOR TO SUBMISSION. ONE COPY OF EACH DRAWING SHALL BE RETAINED BY THE ENGINEER AND, WITHIN TWO WEEKS OF THE DATE OF RECEIPT BY THE ENGINEER, THE OTHER COPY WILL BE RETURNED TO THE CONTRACTOR WITH THE ENGINEER'S COMMENTS OR WRITTEN APPROVAL AS THE CASE MAY BE.
4. THE APPROVAL OF THE SHOP DETAILS BY THE ENGINEER RELATES TO STRUCTURAL ADEQUACY AND DOES NOT ABSOLVE THE CONTRACTOR FROM THE RESPONSIBILITY FOR DIMENSIONAL ACCURACY.



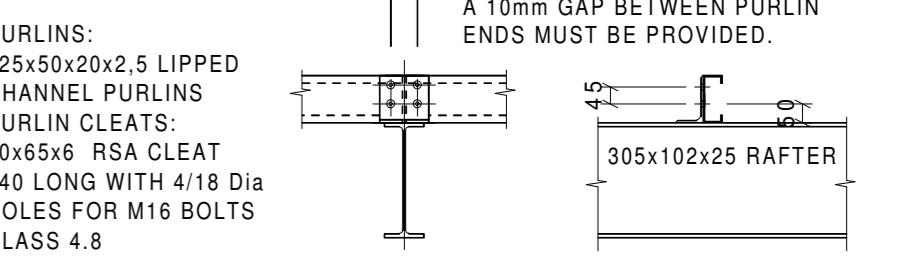
VERTICAL GABLE BRACING
TYPICAL DETAIL
1:20



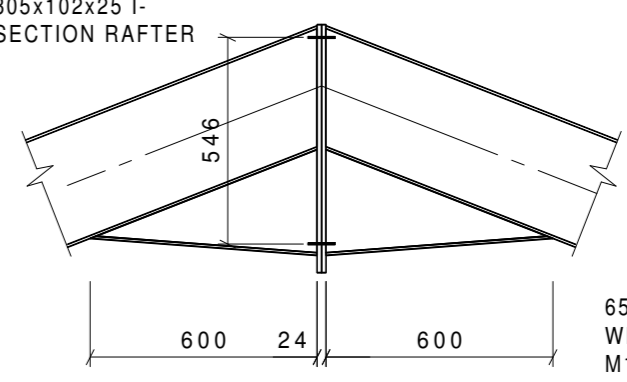
COLUMN BASEPLATE DETAIL
1:20



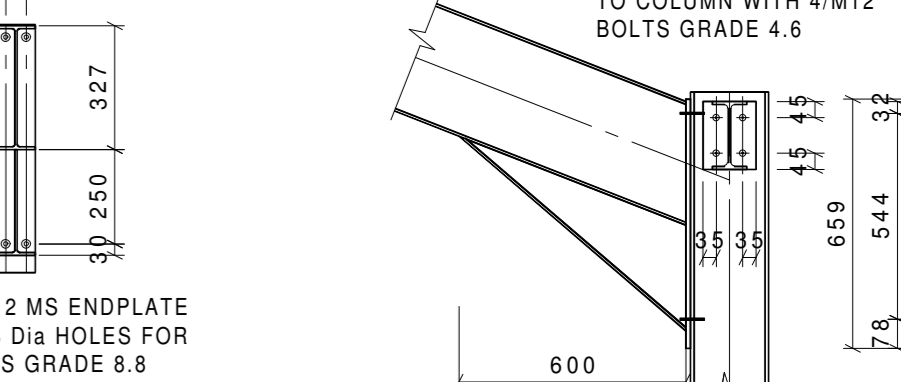
KNEE BRACE DETAIL
1:20



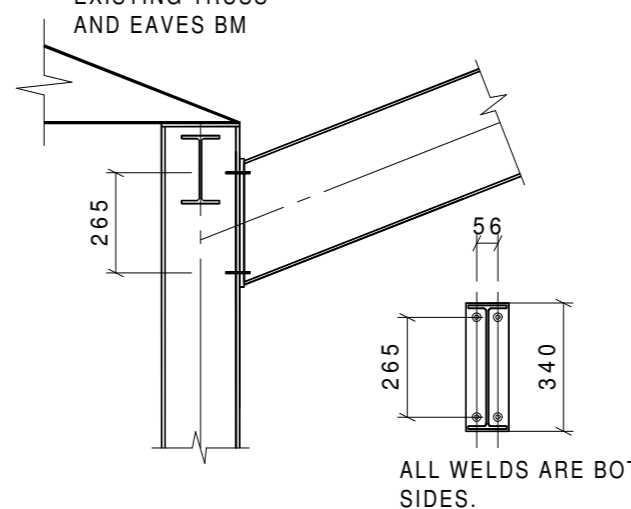
PURLIN CLEAT DETAIL
1:20



APEX CONNECTION
1:20

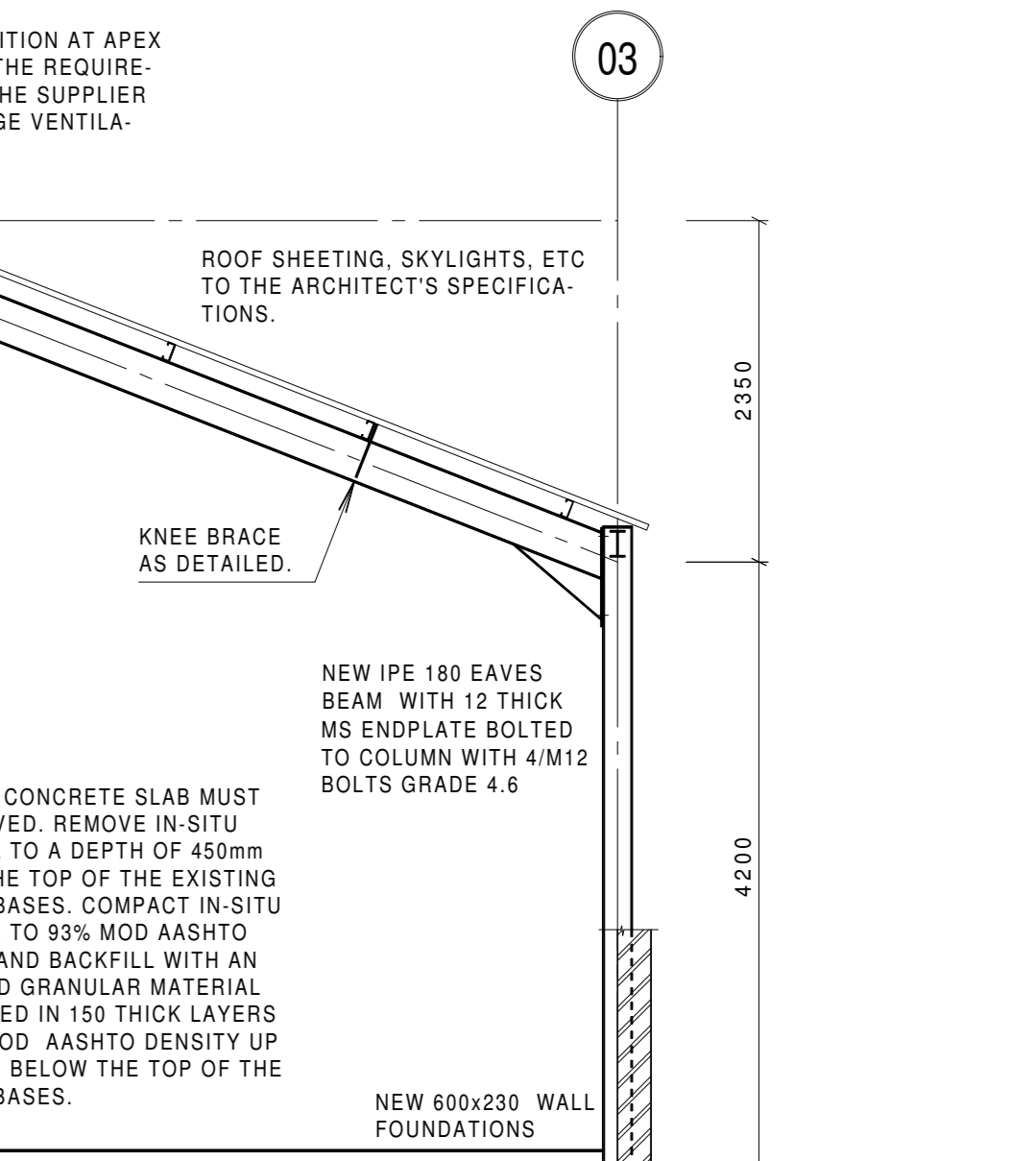


HAUNCH CONNECTION
1:20



PINNED CONNECTION
1:20
(CONNECTION BETWEEN EXISTING COLUMN AND NEW RAFTER.)

CONNECTION DETAILS
1:20



SECTION A
1:50

NO.	DATE	REVISION	BY	CHECKED BY	APP. BY	APP. BY	REFERENCE DRAWING
001	03-02-17	STORM WATER SYSTEM REMOVED	TK	SP	TK		
000	30-06-16	ISSUED FOR CONSTRUCTION	EFM	SP	EFM		

NO.	DATE	REVISION	BY	CHECKED BY	APP. BY	APP. BY	REFERENCE DRAWING
001	30-06-16	ISSUED FOR CONSTRUCTION	EFM	SP	EFM		